



GMT MONTHLY MEMBERSHIP PROGRESS REPORT

Results as of: 8/31/2019

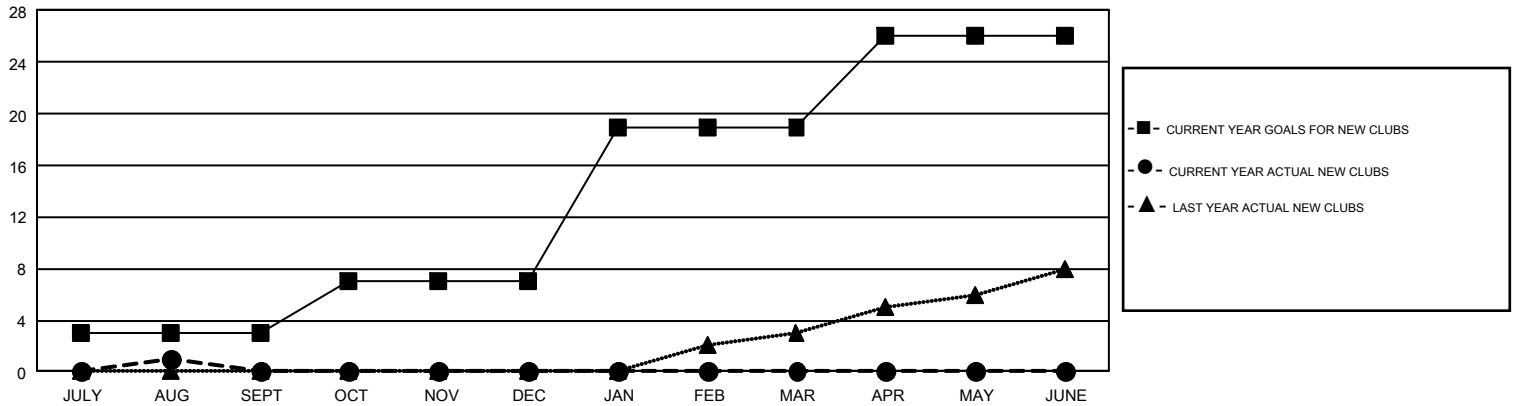
GMT Constitutional Area 1, Group F

GMT: OPEN

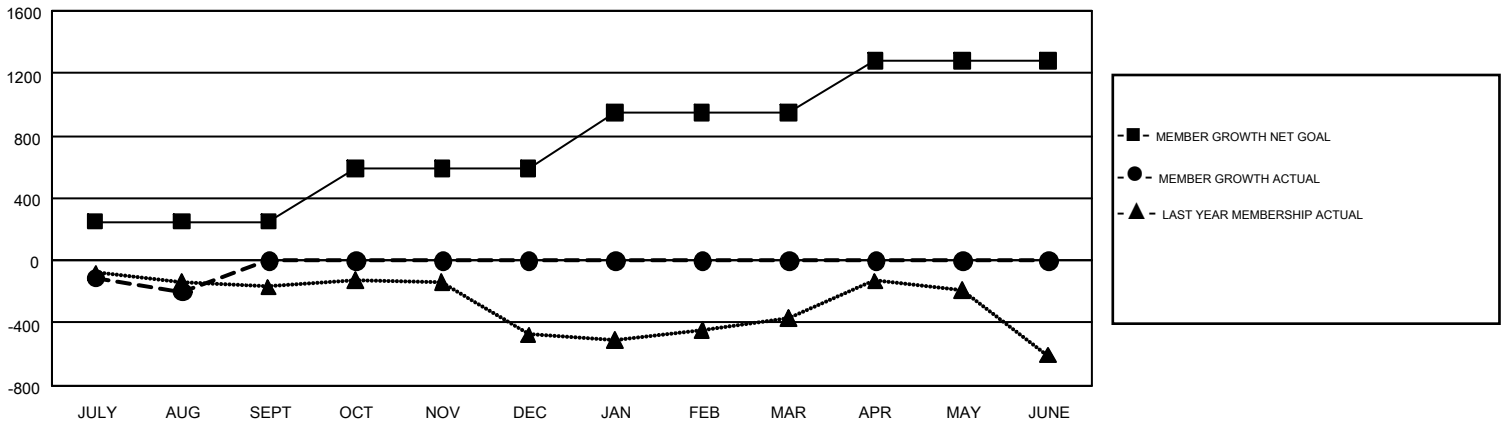
REPORT DOES NOT INCLUDE CLUBS IN UNDISTRICTED AREAS.

Clubs				Members			
RESULTS FOR 2019-2020				RESULTS FOR 2019-2020			
QUARTER	NEW CLUB GOAL	NEW CLUBS	DROPPED CLUBS	QUARTER	MEMBER GROWTH NET GOAL	MEMBER GROWTH ACTUAL	DROPPED MEMBERS ACTUAL (including transfers)
JULY/AUG/SEPT	3	1	1	JULY/AUG/SEPT	250	356	478
OCT/NOV/DEC	4	0	0	OCT/NOV/DEC	340	0	0
JAN/FEB/MAR	12	0	0	JAN/FEB/MAR	356	0	0
APR/MAY/JUNE	7	0	0	APR/MAY/JUNE	337	0	0

GOALS AND ACTUAL NEW CLUBS CUMULATIVE



GOALS AND ACTUAL MEMBERS CUMULATIVE



DROPPED CLUBS: 1	124 CLUBS OF 913 ADDED 1 OR MORE NEW MEMBERS	GENDER DISTRIBUTION MALE 15,967 (63.69%) FEMALE 9,103 (36.31%)
DROPPED MEMBERS DECEASED 50 CLUB CANCELLED 12 OTHER 416 TOTAL 478	CLICK HERE FOR CUMULATIVE MEMBERSHIP DATA	TOTAL FAMILY UNIT MEMBERS 4,433 FAMILY MEMBERS PAYING HALF DUES 2,297